



Owners Manual



Snowbike K6

Brenner GmbH - Arnsdorferstr. 19-23 - A-5110 Oberndorf - Austria - Tel: 0043-6272-7777-0 Fax: 0043-6272-7777-22 E-Mail: brenner@brenner.at

www.snowbike.com

Snowbike is a registered Trademark of Brenner Austria

Important: Read this manual before using your Snowbike!



Welcome

Congratulations for choosing a Brenter Original Snowbike®.
Your new Snowbike® offers unique features:

- light weight
- patented active suspension system
- easy collapsibility for a comfortable transport
- patented ski quick change system

To learn more and to increase your skill level we recommend to attend a Snowbike® “Reflex based Workshop”. For a detailed list of Snowbike Rent & Ride Partners please give us a call.

Warning

USE OF SNOWBIKE MAY BE HAZARDOUS. SERIOUS INJURY MAY OCCUR.

Please do not operate your Snowbike® without prior instruction and read this manual carefully.

No passengers allowed.

Weight limit 40 kg (90 lbs).

Snowbike® is a registered Trademark of Brenter Austria
Brenter is a registered Trademark of Brenter Austria.

US Patent No. 5863051 DE Patent Nr. 32 32 970
DE Patent Nr. 195 30 081 DE Patent Nr. 197 09 269
and other pending patents.

technical details are subject to change.



Things you should know



Fun

Winter sports offer a lot of variety and fun. Always be aware that sports in general may be risky. For your personal safety please make yourself confident with the responsibility code and owners manual.



Workshop

To control and enjoy your Snowbike[®] we highly recommend to attend a Snowbike Workshop with a professional Snowbike[®] trainer. How to load a Snowbike[®] onto the lift and various riding techniques will be taught. Snowbike[®] a smile after every run is guaranteed.



Responsibility code

Please find out about national or local regulations and laws before you operate your Snowbike[®].



Health Care

Riding a Snowbike[®] is fun. If you have any health concerns, please consult your doctor first.



Warning

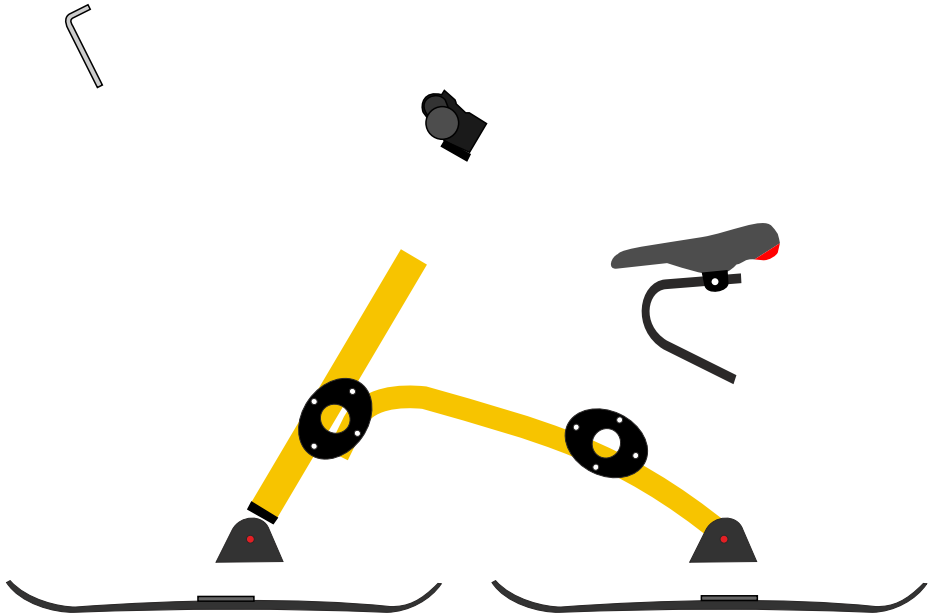
Check your Snowbike[®] prior to every run. Your Snowbike[®] is exclusively designed for use on groomed slopes only. Please stay on designated slope areas only. Always keep both hands on the handle bar and hold tight. Do not use your Snowbike[®] without footskis. No passengers allowed. Do not replace or change any original parts on the Snowbike[®] with non-Breter parts. For your own safety and the safety of other slope users do not jump with your Snowbike[®]. Always stay in control of your speed.



Assembly

Parts list

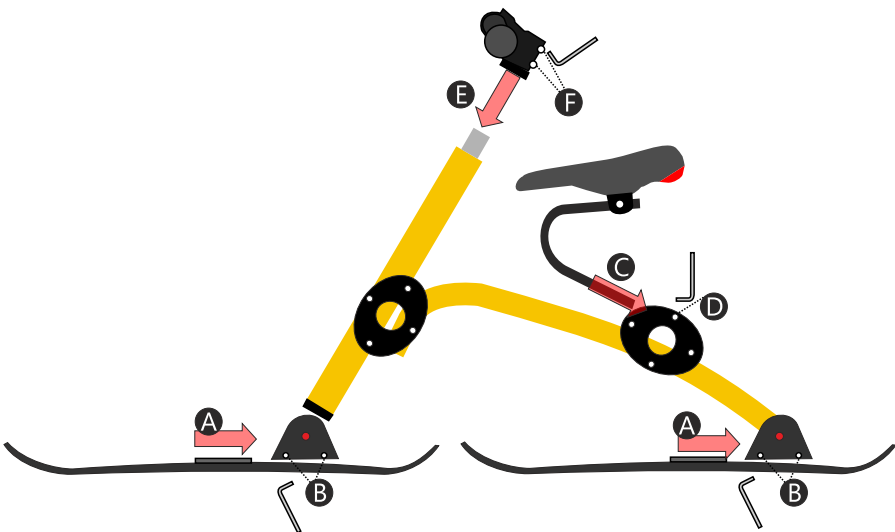
- handle bar & grips
- front ski with quick change plate
- saddle
- frame
- rear ski with quick change plate
- 1 Allen key 5 mm





Assembly

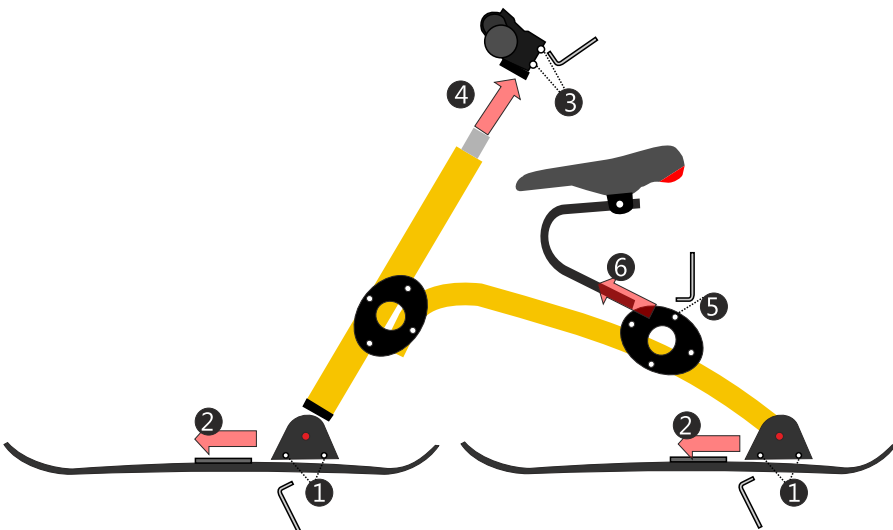
- A** slide front ski and rear ski into connectors
- B** tighten both screws on each connector with about 2 turns (torque 5 Nm)
- C** slide in saddle into OVAL-connector
- D** tighten screw with Allen key approx two turns (torque 5Nm)
- E** slide handle bar onto steering column
- F** tighten both screws with Allen key (5mm) with a torque of approx 5Nm



Folding it up

for transporting your Snowbike in a car, bag, plane, ...

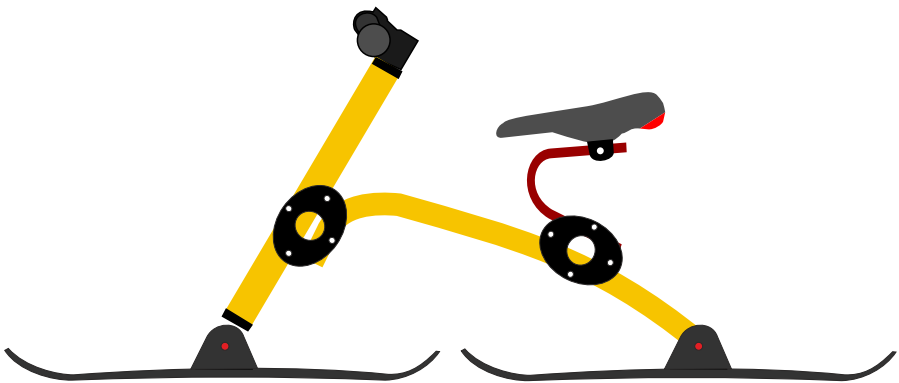
- 1 open both screws of each ski connector with only two turns.
- 2 press the little button on the rear side of the ski quick change plate and slide the ski forward
- 3 open both screws on your handle bar with two turns
- 4 pull off your handle bar or turn by 90° to make you Snowbike slim
- 5 open the saddle fixing screw with only two turns
- 6 slide the saddle forward and pull out of the OVAL-connector





Specifications

- ready to ride
 - length 152 cm
 - width 55 cm
 - saddle height 45 cm
- folded up (disassembled)
 - length 90 cm
 - width 14 cm
 - height 60 cm
- net weight 5.6 kg
- details
 - aluminium frame;
 - aluminium-components;
 - active suspension rear;
- ski
 - carving cap ski
- max rider weight 40 kg (90 lbs)



Änderung von Konstruktion
und Ausstattung vorbehalten.



KEINE PASSAGIERE ERLAUBT!
Ihr Snowbike[®] sollte speziell auf Ihre Körpergröße
und Ihr Gewicht abgestimmt sein!



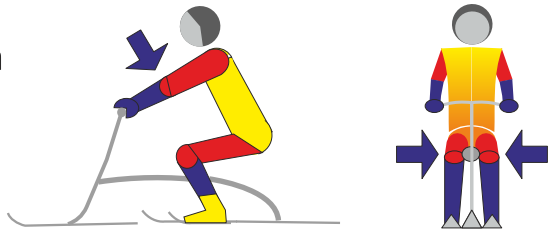
How to ride

“The Breiter Reflex Based Methode”

Here are the basics: Do not control speed by using your footskis. Control your speed by skidding the rear ski using the techniques below. Once you got the basic technique, you can improve your riding technique to powder, moguls, carve and rebound. To improve faster, see our rent & ride partner and join a “reflex based method” workshop. Explore your talents - Snowbike®.

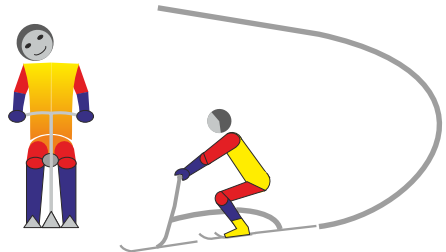
Basic sitting position

- knees together
- arms straight
- no weight on foot ski



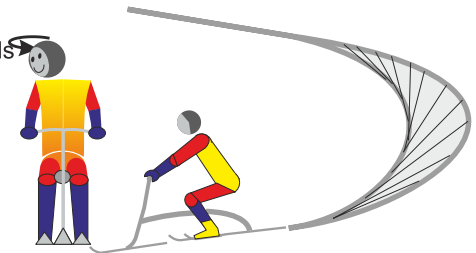
Exercise 1

- lean head into the turn



Exercise 2

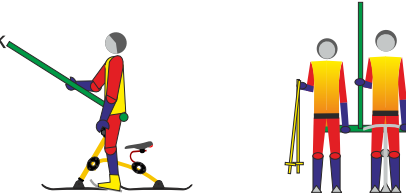
- lean head into the turn
- turn head to the inside -> rear ski skids
- practice skidding to control your speed
- do not put weight on your foot ski



Transport

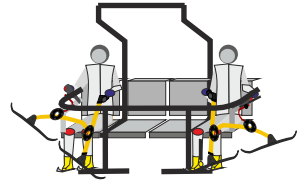
■ T-bar, platter lift

Stand upright, shoulders back on your foot skis. Snowbike between your legs.



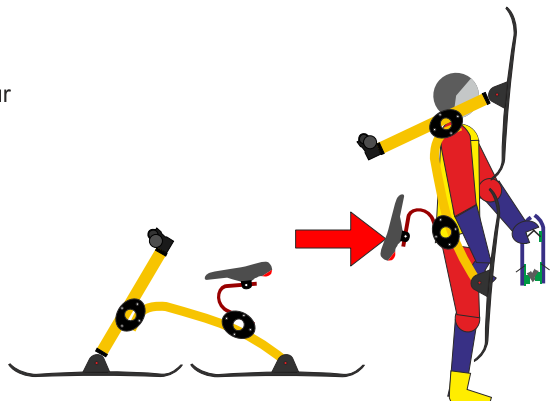
■ Chair lift

When entering the loading zone, have your Snowbike on the outside already. Pick it up when you stop at the loading point and turn your head to the inside. When seated hook the bike with saddle on the armrest or behind the pole. Close the safety bar. Always keep one hand on your bike!



■ Gondola

Rest your Snowbike onto your right shoulder. Make sure the front ski is in front of your face. Take the bike inside the cabin. When having a seat please rest your bike on your right side on the gondola bench.



Please see one of our Rent&Ride partners to learn more on easy transportation procedures.



Responsibility Code

1. Always stay in control, and be able to stop or avoid other people or objects.
2. People ahead of you have the right of way. It is your responsibility to avoid them.
3. You must not stop where you obstruct a trail or are not visible from above.
4. Whenever starting downhill or merging into a trail, look uphill and yield to others.
5. Always use devices to help prevent runaway equipment.
6. Observe all posted signs and warnings. Keep off closed trails and out of closed areas.
7. Prior to using any lift, you must have the knowledge and ability to load, ride and unload safely.



Inspection

DATE

INSPECTION 1

DATE

INSPECTION 2

DATE

INSPECTION 3

DATE

INSPECTION 4

DATE

INSPECTION 5

DATE

INSPECTION 6

DATE

INSPECTION 7

DATE

INSPECTION 8



Please maintain your Snowbike[®] periodically and have it technically checked at least once a year.



send to:

Brener GmbH
ORIGINAL SNOWBIKE
Arnsdorferstr. 19-23
5110 Oberndorf
AUSTRIA

First Class
Postage Required
Post Office will
not deliver without
proper postage.

Product Registration K6

For Your Safety

Registering your product will allow us to contact you in the unlikely event a safety notification is required under the Consumer Product Safety Act.

To Confirm Ownership

In case of an insurance loss such as fire, flood or theft, registration can serve as your proof of purchase.

First name _____

Family Name _____

Street _____

CITY _____

ZIP CODE _____

Phone / Fax _____

E-mail _____

date of purchase: _____ please include receipt _____

date, signature _____

Fax: +43-6272-7777-22

www.snowbike.com