



# Owners Manual



## Snowbike J4

Brenner GmbH - Arnsdorferstr. 19-23 - A-5110 Oberndorf - Austria - Tel: 0043-6272-7777-0 Fax: 0043-6272-7777-22 E-Mail: [brenner@brenner.at](mailto:brenner@brenner.at)

[www.snowbike.com](http://www.snowbike.com)

Snowbike is a registered Trademark of Brenner Austria

**Important: Read this manual before using your Snowbike!**



# Welcome

Congratulations for choosing a Brenter Original Snowbike®.  
Your new Snowbike® C4 offers unique features:

- light weight
- patented active full suspension system (front & rear)
- easy collapsability for a comfortable transport
- patented ski quick change system

To learn more and to increase your skill level we recommend to attend a Snowbike® “Reflex based Workshop”. For a detailed list of Snowbike Rent & Ride Partners please give us a call.

## **Warning**

USE OF SNOWBIKE MAY BE HAZARDOUS. SERIOUS INJURY MAY OCCURE.

Please do not operate your Snowbike® without prior instruction and read this manual carefully.

No passengers allowed.

Weight limit 110 kg (250 lbs).

Snowbike® is a registered Trademark of Brenter Austria  
Brenter is a registered Trademark of Brenter Austria.

US Patent No. 5863051    DE Patent Nr. 32 32 970  
DE Patent Nr. 195 30 081    DE Patent Nr. 197 09 269  
and other pending patents.

technical details are subject to change.



# Things you should know



## **Fun**

Winter sports offer a lot of variety and fun. Always be aware that sports in general may be risky. For your personal safety please make yourself confident with the responsibility code and owners manual.



## **Workshop**

To control and enjoy your Snowbike<sup>®</sup> we highly recommend to attend a Snowbike Workshop with a professional Snowbike<sup>®</sup> trainer. How to load a Snowbike<sup>®</sup> onto the lift and various riding techniques will be taught. **Snowbike<sup>®</sup> a smile after every run is guaranteed.**



## **Responsibility code**

Please find out about national or local regulations and laws before you operate your Snowbike<sup>®</sup>.



## **Health Care**

Riding a Snowbike<sup>®</sup> is fun. If you have any health concerns, please consult your doctor first.



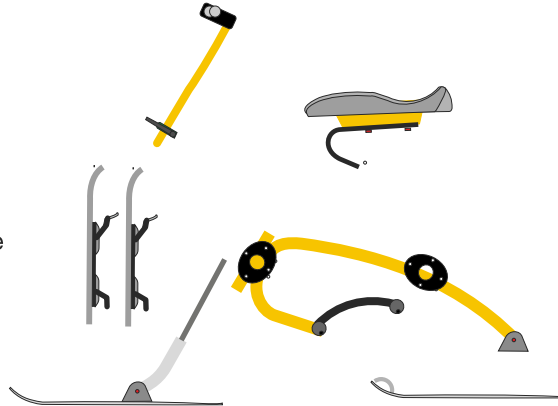
## **Warning**

Check your Snowbike<sup>®</sup> prior to every run. Your Snowbike<sup>®</sup> is exclusively designed for use on groomed slopes only. Please stay on designated slope areas only. Always keep both hands on the handle bar and hold tight. Do not use your Snowbike<sup>®</sup> without footskis. No passengers allowed. Do not replace or change any original parts on the Snowbike<sup>®</sup> with non-Brenter parts. For your own safety and the safety of other slope users do not jump with your Snowbike<sup>®</sup>. Always stay in control of your speed.

# Assembly

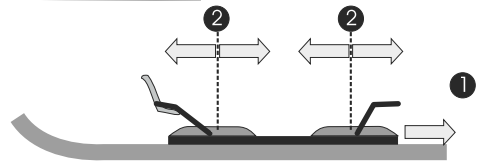
## Parts list

- handle bar & grips & clamp
- front ski with quick change plate
- saddle
- saddle riser
- active suspension
- 2 bolts 6 mm
- frame
- rearski with clamps and quick change plate
- 1 pair of foot skis (optional)



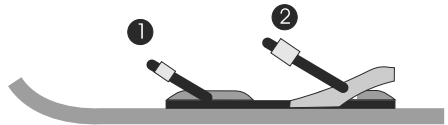
## Plate binding

- ① slide out black lever
- ② move toe and heel clip to adjust your shoe size



## Boarder binding

- open both ladders
  - move in with heel first adjust boot in middle of binding
- ① close front ladder first
  - ② than close slide out black lever

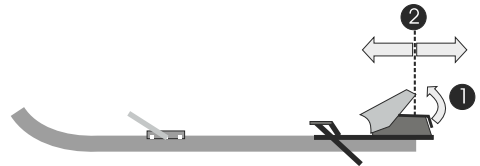


Always use safety strap!

## Step in binding (optional)

Adjust rear binding position by lifting tab ① and sliding binding along channel ②

Insert toe of boot into plate near tip and position heel over tabs of rear binding. Lower heel down until rear binding clamps boot.



Skistopper has to be on outside.

# Assembly

## Assemble rear ski to frame

Tools required:

1. medium channel locks
2. 5 mm allen wrench

1. position the rear ski so the connector plate (A) is behind connector cup (B). Matching the plate to groove in the cup push the ski in until click is heard.

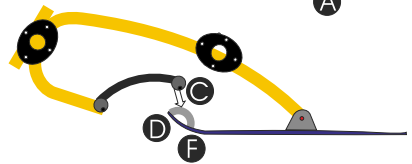
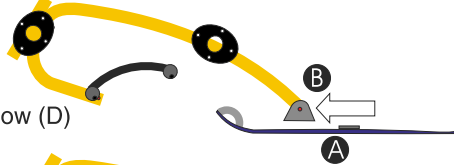


2. tighten both screws

3. Move hole (C) matching front hole of connector bow (D)

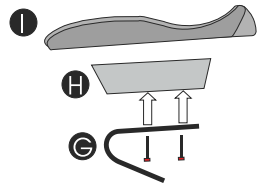


4. tighten screws (F) not to hard black spring-bow has to move relativ to connector bow. (D)



## Assemble saddle

Assemble saddle (I) as shown with screws.



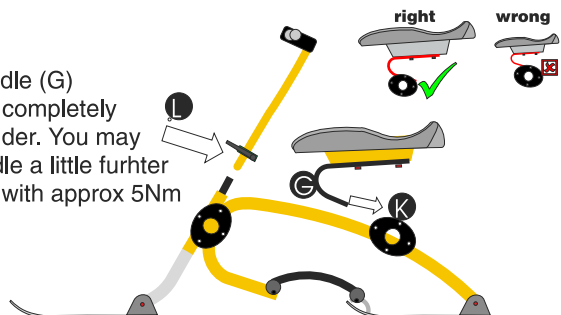
## Attach saddle to frame

Open screw (K) with 2 truns. Slide in saddle (G) Make sure Titanal Springbow is slid in completely until it is visible at the right end black holder. You may adjust sitting position by moving the saddle a little furhter back. Close screw (K) with 2 turns again with approx 5Nm



## Handle bar

Always check quick look (L) and make sure the handle bar clamp is tight. Do not position the quick look lever facing the sitting position.



# Folding it up

Simply fold your Snowbike® up for transport in car or gondola

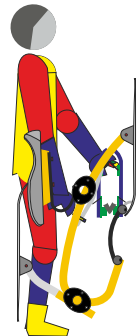
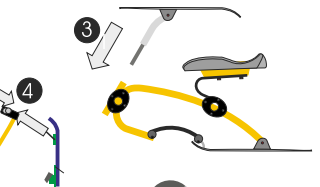
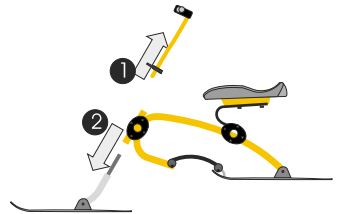
① open quick lock on handle bar

② disassemble as shown

③ Reassemble as shown.

④ Hook foot ski onto handle bar.

⑤ Put foot ski and handle bar in one hand.  
Put frame in the other hand, with rear ski facing forward and pointing up.





# Specifications

- **ready to ride**

length	166 cm
width	51 cm
saddle height	47 cm

- **folded up (disassembled)**

length	85 cm
width	14 cm
height	33 cm

- **details**

aluminium frame;  
aluminium-components;  
active suspension rear;

- **ski**

carving cap ski

- **net weight** 6 kg class

- **max rider weight** 60 kg



Construction and materials may vary.  
measurements are approximate and may vary with bike sizes.



**NO PASSENGERS ALLOWED!**

Your Snowbike<sup>®</sup> should be customized  
to your body measurements.

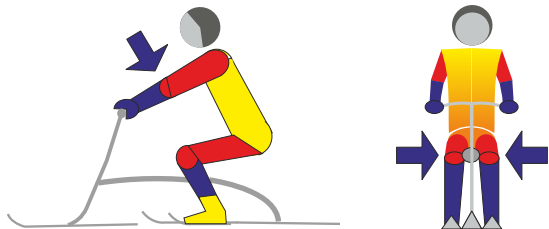
# How to ride

## “The Brenter Reflex Based Methode”

Here are the basics: Do not control speed by using your footskis. Control your speed by skidding the rear ski using the techniques below. Once you got the basic technique, you can improve your riding technique to powder, mogules, carve and rebound. To improve faster, see our rent & ride partner and join a “reflex based method” workshop. Explore your talents - Snowbike®.

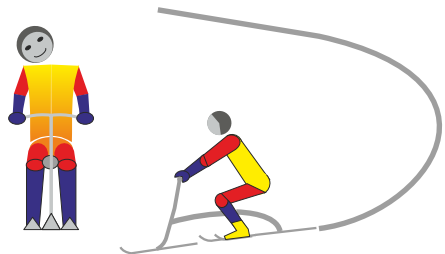
### Basic sitting position

- knees together
- arms straight
- no weight on foot ski



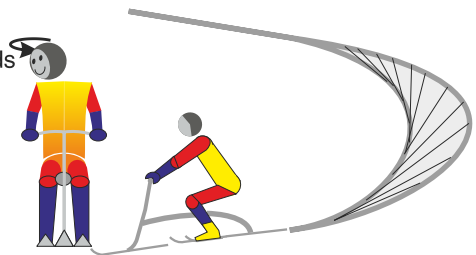
### Exercise 1

- lean head into the turn



### Exercise 2

- lean head into the turn
- turn head to the inside -> rear ski skidds
- practice skidding to control your speed
- do not put weight on your foot ski

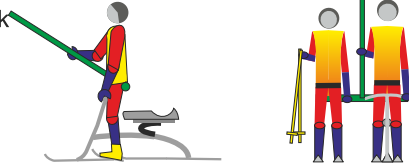




# Transport

**T-bar, platter lift:** stand upright Snowbike between your legs.

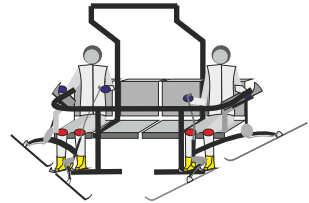
Stand upright, shoulders back on your foot skis. Snowbike between your legs.



**Chair lift** always use outside seats

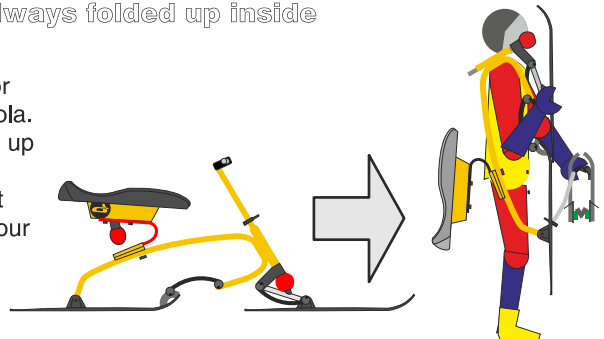
When entering the loading zone, have your Snowbike on the outside already. Pick it up when you stop at the loading point and turn your head to the inside. When seated hook the bike with saddle on the armrest or behind the pole. Close the safety bar.

**Always keep one hand on your bike!**



**Gondola** always folded up inside

Within seconds your Snowbike® will be folded for easy transport in the gondola. Before entering lift line fold up Snowbike as shown on previous page. Take a seat with Snowbike® between your legs.



**Please see one of our Rent&Ride partners to learn more on easy transportation procedures.**



# Responsibility Code

1. Always stay in control, and be able to stop or avoid other people or objects.
2. People ahead of you have the right of way. It is your responsibility to avoid them.
3. You must not stop where you obstruct a trail or are not visible from above.
4. Whenever starting downhill or merging into a trail, look uphill and yield to others.
5. Always use devices to help prevent runaway equipment.
6. Observe all posted signs and warnings. Keep off closed trails and out of closed areas.
7. Prior to using any lift, you must have the knowledge and ability to load, ride and unload safely.



# Inspection

DATE

**INSPECTION 1**

DATE

**INSPECTION 2**

DATE

**INSPECTION 3**

DATE

**INSPECTION 4**

DATE

**INSPECTION 5**

DATE

**INSPECTION 6**

DATE

**INSPECTION 7**

DATE

**INSPECTION 8**



Please maintain your Snowbike<sup>®</sup> periodically and have it technically checked at least once a year.



send to:

Brener GmbH  
ORIGINAL SNOWBIKE  
Arnsdorferstr. 19-23  
5110 Oberndorf  
AUSTRIA

First Class  
Postage Required  
Post Office will  
not deliver without  
proper postage.

## Product Registration J4

### **For Your Safety**

Registering your product will allow us to contact you in the unlikely event a safety notification is required under the Consumer Product Safety Act.

### **To Confirm Ownership**

In case of an insurance loss such as fire, flood or theft, registration can serve as your proof of purchase.

First name \_\_\_\_\_

Family Name \_\_\_\_\_

Street \_\_\_\_\_

CITY \_\_\_\_\_

ZIP CODE \_\_\_\_\_

Phone / Fax \_\_\_\_\_

E-mail \_\_\_\_\_

date of purchase: \_\_\_\_\_ please include receipt

date, signature \_\_\_\_\_

**Fax: +43-6272-7777-22**

**www.snowbike.com**