

Owners manual



Skibike B6 °

Brener GmbH - Arnsdorferstr. 19-23 - A-5110 Oberndorf - Austria - Tel: 0043-6272-7777-0 Fax: 0043-6272-7777-22 E-Mail: brener@brener.at

www.skibike.at

Snowbike is a registered Trademark of Brener Austria

Important: Read this manual before using your Snowbike!

Welcome

Congratulations for choosing a Brener Original Skibike®.
Your new Skibike® offers unique features:

- light weight
- patented active full suspension system (front & rear)
- easy collapsability for a comfortable transport
- patented ski quick change system

To learn more and to increase your skill level we recommend to attend a Skibike® “Workshop”. For a detailed list of Skibike Rent & Ride Partners please give us a call or check on www.skibike.at

Warning

USE OF SKIBIKE MAY BE HAZARDOUS. SERIOUS INJURY MAY OCCURE.

Please do not operate your Skibike® without prior instruction and read this manual carefully.

No passengers allowed.

Weight limit 110 kg (250 lbs).

Skibike® is a registered Trademark of Brener Austria
Brener is a registered Trademark of Brener Austria.

US Patent No. 5863051 DE Patent Nr. 32 32 970
DE Patent Nr. 195 30 081 DE Patent Nr. 197 09 269
and other pending patents.

technical details are subject to change.

Things you should know



Fun

Winter sports offer a lot of variety and fun. Always be aware that sports in general may be risky. For your personal safety please make yourself confident with the responsibility code and owners manual.



Workshop

To control and enjoy your Skibike® we highly recommend to attend a Skibike Workshop with a professional Skibike® trainer. How to load a Skibike® onto the lift and various riding techniques will be taught. Skibike® a smile after every run is guaranteed.



Responsibility code

Please find out about national or local regulations and laws before you operate your Skibike®.



Health Care

Riding a Skibike® is fun. If you have any health concerns, please consult your doctor first.



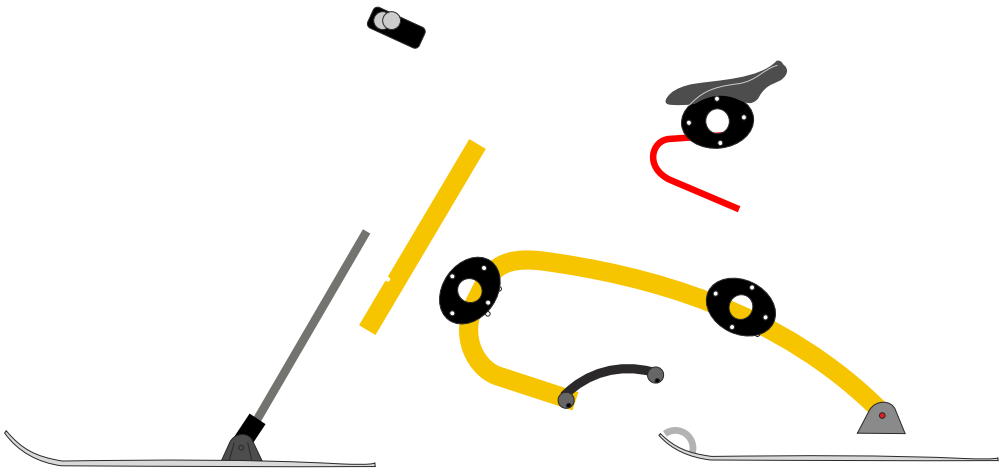
Warning

Check your Skibike® prior to every run. Your Skibike® is exclusively designed for use on groomed slopes only. Please stay on designated slope areas only. Always keep both hands on the handle bar and hold tight. On more advanced terrain do not use your Skibike® without footskis. No passengers allowed. Do not replace or change any original parts on the Skibike®. For your own safety and the safety of other slope users do not jump with your Skibike®. Always stay in control of your speed.

Assembly

parts list

- handle bar
- front ski with steering column
- saddle
- Titanal-Alu-suspension system
- frame
- rear ski with quick change connection device
- 5 mm allen key

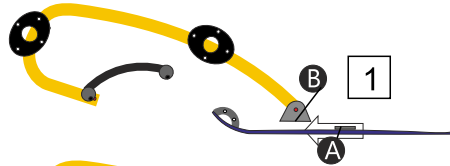


Assembly

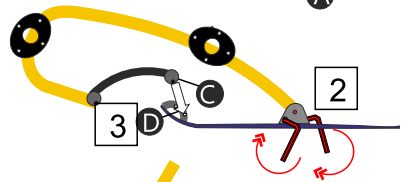
required tool
5mm allen key



1. slide the rear ski fixing plate (A) into the frames holding device (B).



2. tighten both screws in part (B) with your allen key (max torque approx 3Nm)



3. place the bow-connectors (C) to meet with the holes in the ski connectors device (D).

4. tighten 2 screws M6x25 with your allen key (max. torque approx 3Nm).

5. remove the screw M6x55 from the black oval. Slide in the steering pole and position the pole's notch to fit the screw M6x55 you just have taken out earlier. Slide in the screw.

6. tighten the screw (max. torque approx 3 Nm)

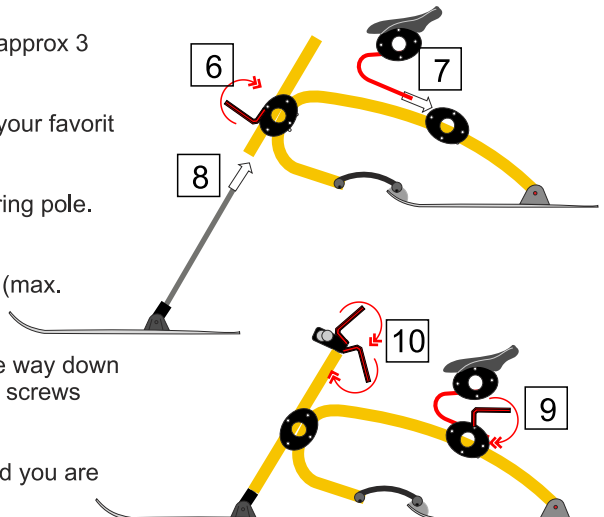
7. slide in the saddle and choose your favorite sitting position.

8. slide the front fork into the steering pole.

9. tighten the saddle clamp screw (max. torque approx. 5Nm)

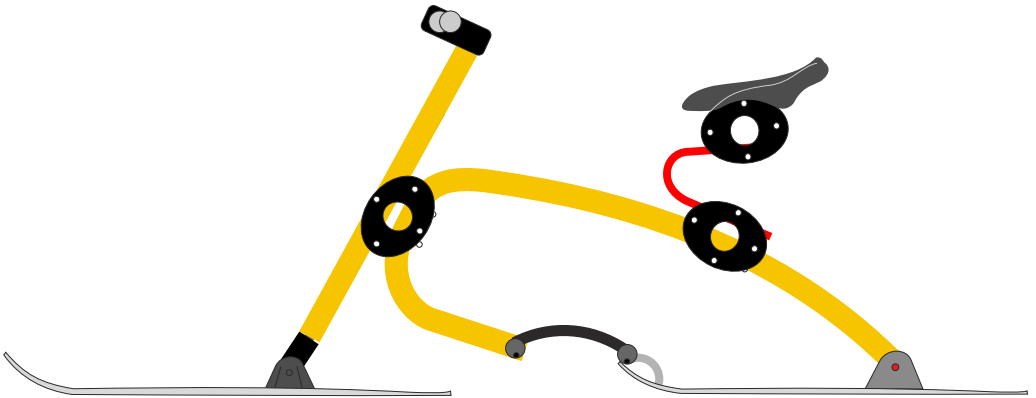
10. position your handle bar all the way down on your front fork and secure both screws with a max torque of 5Nm.

11. check all screws for tight fit and you are **READY TO RIDE**



Specifications

- ready to ride
 - length 176 cm
 - width 69 cm
 - saddle height 60 cm
- GEAR
 - aluminium 6060 frame
 - aluminium handle bar
 - active suspension
- SKI
 - wooden core cap construction
- weight 6,95 kg
- max. capacity 110 kg



construction, color, design and technical details are subject to change.



NO PASSENGERS ALLOWED !

How to ride easy slopes - no footski

The basics for easy slopes without footskis.

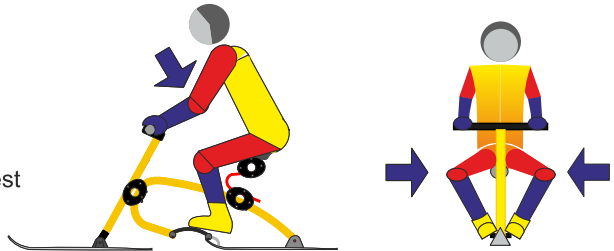
PHASE 1: control your speed by using feet on the ground.

PHASE 2: control your speed by skidding the rear ski using the techniques below.

Once you got the basic technique without footski, you can upgrade to riding with footskis and expand the rideable terrain to intermediate slopes to powder and mogules. To improve faster, see our rent & ride partner and join a workshop. Explore your talents - Snowbike® .

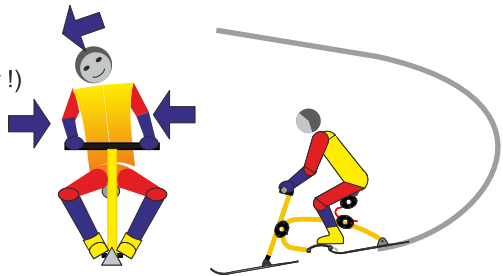
Basic sitting position

- knees apart
- arms slightly bended
- rest your feet onto the foot rest



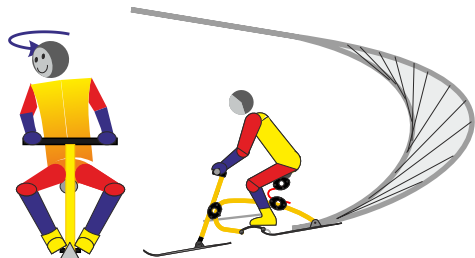
Exercise 1 - intuitive turn

- lean head into the turn (ear on sholder !)
- lean your upper body into the turn
- straighten the turn´s outside arm
- the bike will make a turn



Exercise 2 - skidded turn

- lean head into the turn (ear on sholder !)
- lean your upper body into the turn
- straighten the turn´s outside arm
- rotate your head into the turn
- your rear ski will start to skidd



the skid of your rear ski controls your speed

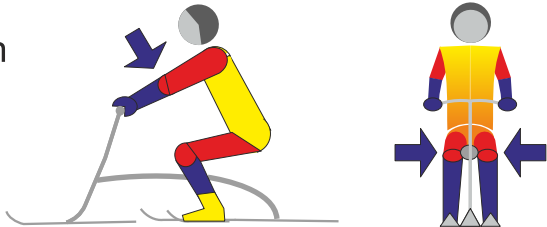
Do not use in ice conditions or off piste

How to ride - with footskis for advanced

Here are the basics: Do not control speed by using your footskis. Control your speed by skidding the rear ski using the techniques below. Once you got the basic technique, you can improve your riding technique to powder, mogules, carve and rebound. To improve faster, see our rent & ride partner and join a "reflex based method" workshop. Explore your talents - Snowbike®.

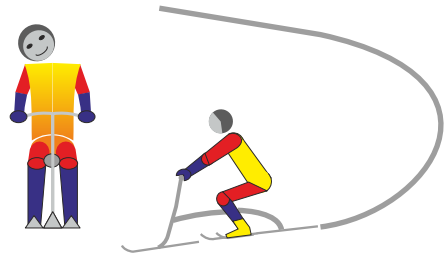
Basic sitting position

- knees together
- arms straight
- no weight on foot ski



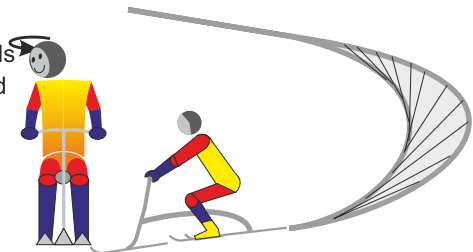
Exercise 1

- lean head into the turn



Exercise 2

- lean head into the turn
- turn head to the inside > rear ski skids
- practice skidding to control your speed
- do not put weight on your foot ski

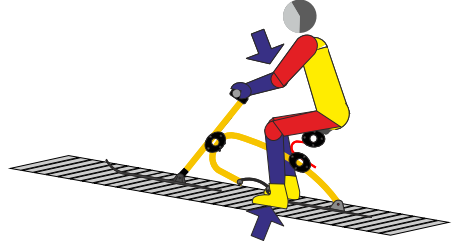


Transport

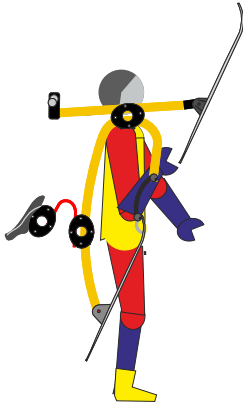
■ MAGIC CARPET

Travel: sit down and rest your feet onto the carpet.

Exit: stand up and walk away



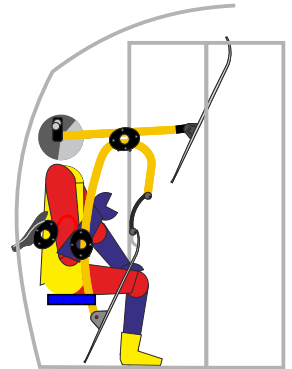
■ GONDOLA



WALK: rest your skibike onto your right shoulder

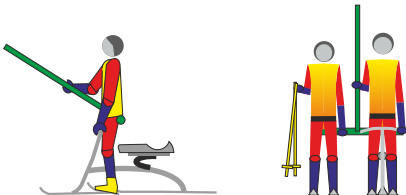
ENTER CABIN: keep the bike on your shoulder lean forward to lower the frontski when you step into the cabin.

SIT DOWN IN CABINE: place the bike to your right very close to your body.



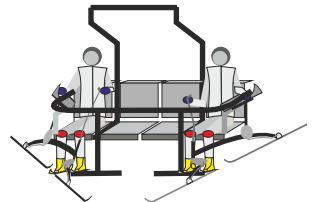
■ T-BAR (footskis required)

stand upright on your footski's like a skier



■ CHAIR-LIFT (fooskis required)

use the outside seats, hook saddle onto armrest



See a rent&ride partern and attend a workshop to learn how to operate your Skibike®!

Responsibility Code

1. Always stay in control, and be able to stop or avoid other people or objects.
2. People ahead of you have the right of way. It is your responsibility to avoid them.
3. You must not stop where you obstruct a trail or are not visible from above.
4. Whenever starting downhill or merging into a trail, look uphill and yield to others.
5. Always use devices to help prevent runaway equipment.
6. Observe all posted signs and warnings. Keep off closed trails and out of closed areas.
7. Prior to using any lift, you must have the knowledge and ability to load, ride and unload safely.

Inspektion

DATE

INSPECTION 1

DATE

INSPECTION 2

DATE

INSPECTION 3

DATE

INSPECTION 4

DATE

INSPECTION 5

DATE

INSPECTION 6

DATE

INSPECTION 7

DATE

INSPECTION 8



Please maintain your Snowbike® periodically and have it technically checked at least once a year.



send to:

Brener GmbH
ORIGINAL SNOWBIKE
Arnsdorferstr. 19-23
5110 Oberndorf
AUSTRIA

First Class
Postage Required
Post Office will
not deliver without
proper postage.

Product Registration SKIBIKE B6

For Your Safety

Registering your product will allow us to contact you in the unlikely event a safety notification is required under the Consumer Product Safety Act.

To Confirm Ownership

In case of an insurance loss such as fire, flood or theft, registration can serve as your proof of purchase.

First name _____

Family Name _____

Street _____

CITY _____

ZIP CODE _____

Phone / Fax _____

E-mail _____

date of purchase: _____ please include receipt _____

date, signature _____

Fax: +43-6272-7777-22

www.skibike.at